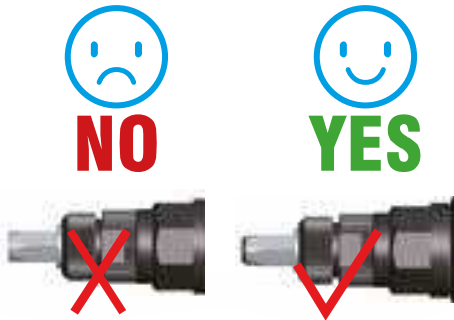
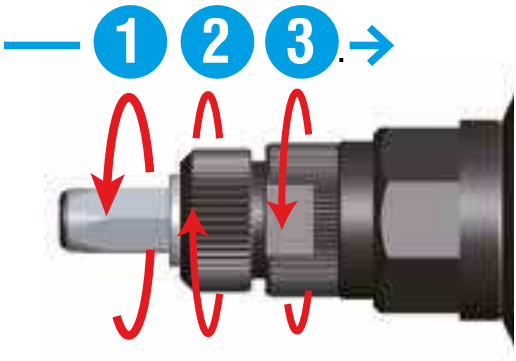
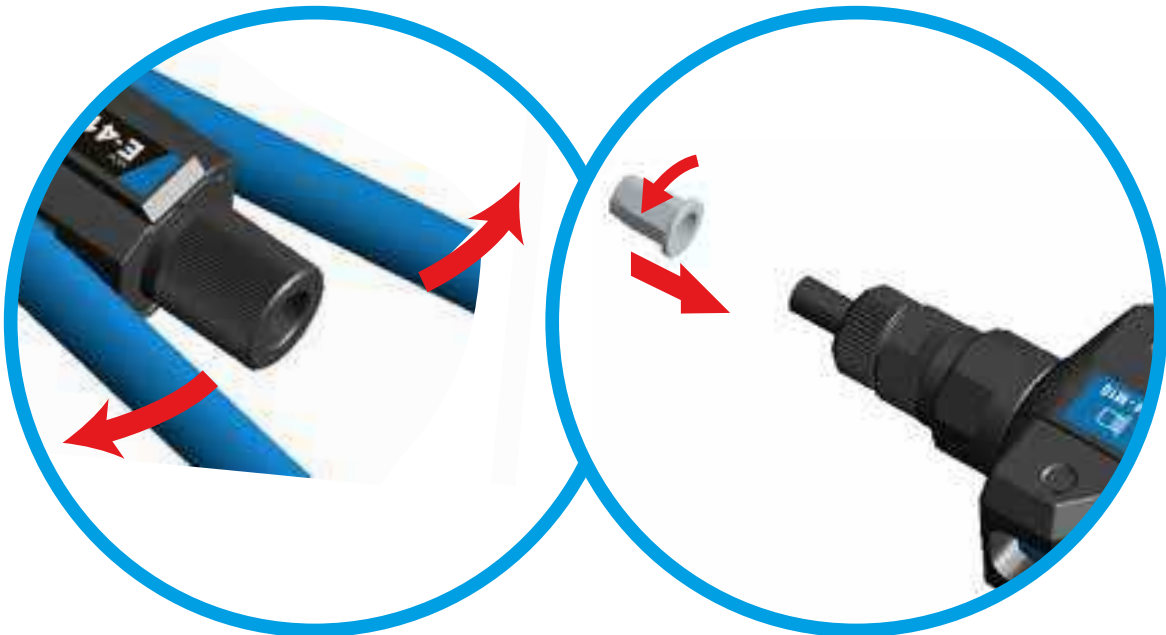


TOOL CAPACITIES AND SPECIFICATIONS

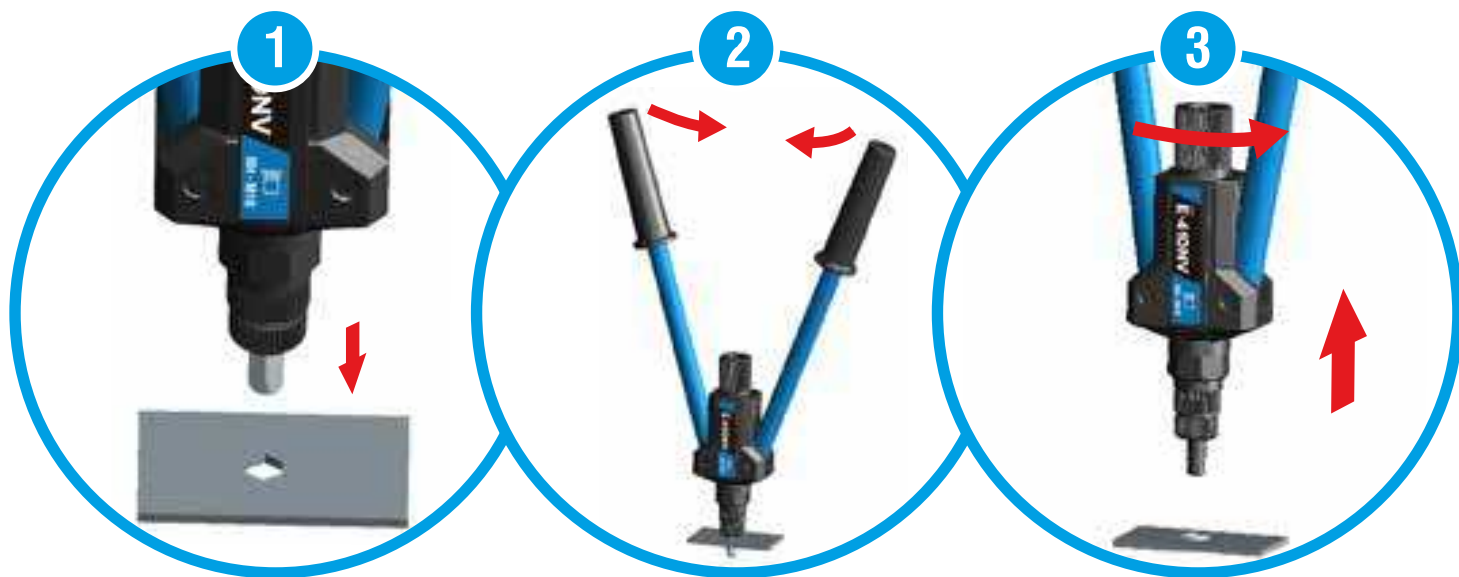
Capacities: M4 to M10
Length: 485 mm
Weight: 2.0 kg
Levers: Steel
Handle material: ABS



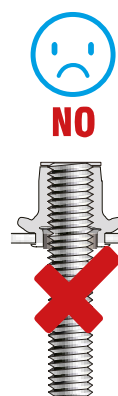
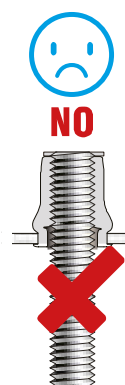
SETTING



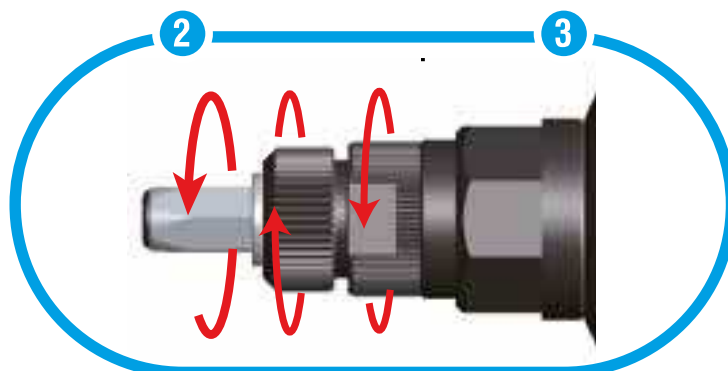
OPERATION



FINISH SETTING



- 1 Correctly set
- 2 Not fully set
- 3 Over-set. Do not pull the rivnut up too tightly as you may strip the thread in the rivnut or damage the tool mandrel.



UNINSTALLATION OF PULLER

1. SCREW OFF ANVIL AND LOCKNUT



2. PULL OUT THE PULLER



3. INSERT THE PULLER FROM THE TOOL FORWARD



4. SCREW ON LOCKNUT THEN ANVIL

