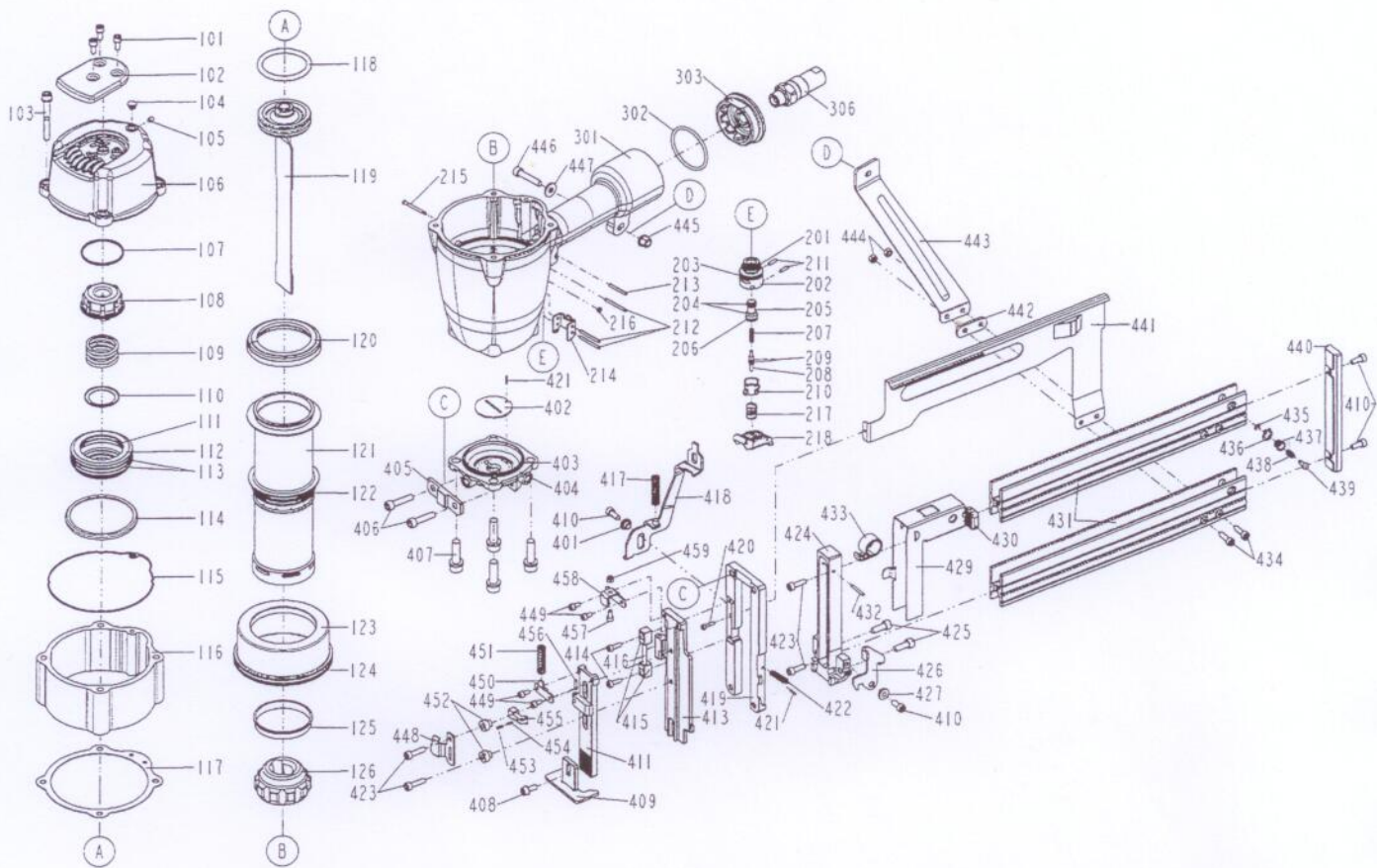


DIAGRAM OF KBS160A



| ITEM NO. | PART NO. | DESCRIPTION | ITEM NO. | PART NO. | DESCRIPTION | ITEM NO. | PART NO. | DESCRIPTION |
|----------|-----------------|--------------------|----------|-----------------|------------------------|----------|-----------------|------------------------|
| 101 | 2040100-03090-2 | BOLT ASSY | 210 | 11373-0084701-1 | TRIGGER VALVE HEAD | 424 | 11303-1684701-1 | DRIVER GUIDE |
| 102 | 11371-0374706-1 | DEFLECTOR | 211 | 2040400-05060-0 | SPRING PIN | 425 | 2040101-04040-2 | HEX.SOC.HD.BOLT |
| 103 | 2040101-04281-0 | HEX.SOC.HD.BOLT | 212 | 2040400-05160-0 | SPRING PIN | 426 | 1135Y-1524701-1 | LATCH |
| 104 | 1135S-0350001-1 | GROMMET | 213 | 2040400-05130-0 | SPRING PIN | 427 | 11398-1524701-1 | LATCH SPRING BUSHING A |
| 105 | 2040104-03010-0 | HEX.SOC.HD.SCREW | 214 | 11338-0374703-1 | SAFETY GUIDE | 429 | 11363-1684701-1 | PUSHER |
| 106 | 11369-0374309-1 | CAP | 215 | 11318-0374701-1 | TRIGGER PIVOT PIN | 430 | 1135F-0684701-1 | PUSHER CUSHION |
| 107 | 11380-0374702-1 | GASKET | 216 | 1131D-0460001-1 | URETHANE RETAINER | 431 | 11389-1520001-1 | MAGAZINE A |
| 108 | 11370-0370003-2 | SEAL | 217 | 11376-0370001-1 | SPRING | 432 | 2040400-04110-0 | SPRING PIN |
| 109 | 11360-0370001-2 | COMPRESSION SPRING | 218 | 11224-0371102-1 | TRIGGER UNIT | 433 | 11278-1520001-1 | SPRING UNIT |
| 110 | 11381-0370003-1 | WASHER | 301 | 11230-0370612-1 | GUN BODY UNIT | 434 | 2040101-03070-0 | HEX.SOC.HD.BOLT |
| 111 | 2041108-05050-0 | O - RING | 302 | 2041108-05040-0 | O - RING | 435 | 2040302-23010-0 | E - RING |
| 112 | 11368-0370005-1 | HD.VALVE PISTON | 303 | 11346-0371312-1 | END CAP | 436 | 2040301-10010-0 | SNAP RING |
| 113 | 2041108-07040-0 | O - RING | 306 | 11217-1520002-1 | VALVE UNIT | 437 | 1130W-1524701-1 | DOOR LATCH COVER |
| 114 | 1136D-0374701-1 | PRESS RING | 401 | 11398-1524704-1 | LATCH SPRING BUSHING C | 438 | 11311-0074701-1 | LATCH SPRING |
| 115 | 11302-0374705-1 | CYLINDER CAP SEAL | 402 | 11388-1524701-1 | DRIVER GUIDE | 439 | 11310-0074701-1 | DOOR LATCH |
| 116 | 1130E-1684301-1 | CAP | 403 | 2041101-07010-0 | O - RING | 440 | 11347-1684701-1 | REAR PLATE |
| 117 | 1130B-1524701-1 | GASKET | 404 | 11326-1524701-1 | BASE | 441 | 11348-1680001-1 | MOUNTING BRACKET |
| 118 | 2041104-05091-0 | O - RING | 405 | 11353-1524701-1 | DRIVER GUIDE COVER B | 442 | 11380-1524701-1 | GASKET |
| 119 | 11204-1680001-1 | DRIVER UNIT | 406 | 2040101-04090-2 | HEX.SOC.HD.BOLT | 443 | 11323-1684701-1 | POSITIONING SHEET |
| 120 | 11399-0370002-1 | COLLAR | 407 | 2040100-05010-2 | BOLT ASSY | 444 | 2040500-03020-0 | LOCK NUT |
| 121 | 11320-1680001-1 | CYLINDER | 408 | 2040100-03240-0 | BOLT W/FLAT WASHER | 445 | 2040501-04010-0 | BOLT CAP |
| 122 | 2041106-07020-0 | O - RING | 409 | 11254-1524701-1 | SAFETY A UNIT | 446 | 2040101-04110-0 | HEX.SOC.HD.BOLT |
| 123 | 11321-1680001-1 | CYLINDER SPACER | 410 | 2040101-03050-2 | HEX.SOC.HD.BOLT | 447 | 2040202-04010-0 | FLAT WASHER |
| 124 | 2041108-10010-0 | O - RING | 411 | 11254-1684701-1 | SAFETY C UNIT | 448 | 1137A-1524701-1 | COVER-SAFETY A |
| 125 | 11322-0370002-1 | CYLINDER RING | 413 | 11352-1684701-1 | DRIVER GUIDE COVER A | 449 | 2040100-02040-2 | BOLT ASSY |
| 126 | 11327-1524701-1 | BUMPER | 414 | 2040101-02060-2 | HEX.SOC.HD.BOLT | 450 | 1137A-1524702-1 | COVER-SAFETY B |
| 201 | 2041104-02020-0 | O - RING | 415 | 1131F-1524701-1 | ANCHOR BLOCK | 451 | 11337-1684701-1 | SAFETY SPRING |
| 202 | 11374-0084701-1 | PLUNGER CAP | 416 | 11329-1524701-1 | PIN | 452 | 11398-1524703-1 | LATCH SPRING BUSHING D |
| 203 | 2041104-02030-0 | O - RING | 417 | 11337-1524701-1 | SAFETY SPRING | 453 | 11377-1524701-1 | SPRING |
| 204 | 2041100-01070-0 | O - RING | 418 | 11256-1684701-1 | SAFETY B UNIT | 454 | 2040400-03030-0 | SPRING PIN |
| 205 | 1133S-0080001-1 | VALVE PLUNGER | 419 | 11303-1684702-1 | DRIVER GUIDE | 455 | 113AK-1524701-1 | SPOPPER A |
| 206 | 2041100-01030-0 | O - RING | 420 | 2040101-01010-0 | HEX.SOC.HD.BOLT | 456 | 2040400-04060-0 | SPRING PIN |
| 207 | 11376-0254701-1 | SPRING | 421 | 2040400-03050-0 | SPRING PIN | 457 | 2040101-02030-0 | HEX.SOC.HD.BOLT |
| 208 | 11375-0084701-1 | PLUNGER | 422 | 11328-1524701-1 | PULL SPRING | 458 | 1137A-1524703-1 | COVER-SAFETY C |
| 209 | 2041102-01030-0 | O - RING | 423 | 2040101-03080-2 | HEX.SOC.HD.BOLT | 459 | 2040500-02010-0 | LOCK NUT |