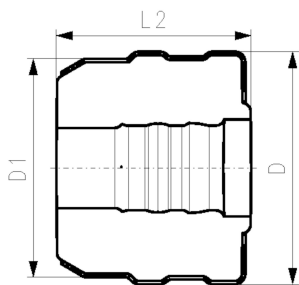
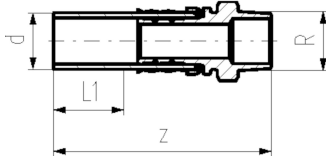




## COOL-FIT 4.0 Adapterfitting PE/Edelstahl Mit Aussengewinde R

### Ausführung:

- Stutzenfitting PE100 SDR11, metrisch mit freiem Ende
- Edelstahl 1.4404 / 316L mit Aussengewinde R
- Dichtung: O-Ring EPDM
- Einschliesslich Isolationshalbschalen



d (mm)	D (mm)	Gewindetyp	Zoll (inch)	DN (mm)	SDR	PN (bar)	Code	Gewicht (kg)	D1 (mm)	L1 (mm)	L2 (mm)	z (mm)
32	103	R	½	25	11	16	<b>738 943 508</b>	0.224	90	36	80	130
32	103	R	¾	25	11	16	<b>738 943 518</b>	0.232	90	36	80	134
32	103	R	1	25	11	16	<b>738 943 528</b>	0.241	90	36	80	134
40	128	R	1 ¼	32	11	16	<b>738 943 509</b>	0.655	110	40	91	156
50	138	R	1 ½	40	11	16	<b>738 943 510</b>	1.020	110	44	96	168
63	149	R	2	50	11	16	<b>738 943 511</b>	1.458	125	48	103	179

The technical data are not binding. They neither constitute expressly warranted characteristics nor guaranteed properties nor a guaranteed durability. They are subject to modification. Our General Terms of Sale apply.

Georg Fischer Piping Systems Ltd, Postfach, CH-8201 Schaffhausen/Switzerland

Phone +41 -(0)52-631 1111

e-mail: [info.ps@georgfischer.com](mailto:info.ps@georgfischer.com)

Internet: <http://www.gfps.com>