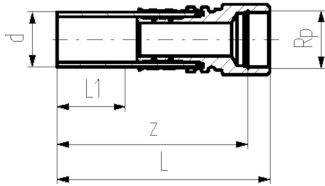




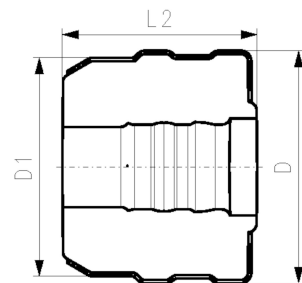
COOL-FIT 4.0 Übergangsfitting PE/Edelstahl Mit Innengewinde Rp

Ausführung:

- Stutzenfitting PE100 SDR11, metrisch mit freiem Ende
- Edelstahl 1.4404 / 316L mit Innengewinde Rp
- Dichtung: O-Ring EPDM
- Einschliesslich Isolationshalbschalen



d (mm)	D (mm)	Gewindetyp	Zoll (inch)	DN (mm)	SDR	PN (bar)	Code	Gewicht (kg)
32	104	Rp	½	25	11	16	738 943 008	0.247
32	104	Rp	¾	25	11	16	738 943 018	0.272
32	104	Rp	1	25	11	16	738 943 028	0.297
40	128	Rp	1 ¼	32	11	16	738 943 009	0.683
50	138	Rp	1 ½	40	11	16	738 943 010	0.734
63	149	Rp	2	50	11	16	738 943 011	1.244



D1 (mm)	L (mm)	L1 (mm)	L2 (mm)	z (mm)
90	132	36	101	118
90	132	36	101	116
90	132	36	101	115
110	157	40	91	141
110	157	44	96	128
125	164	48	103	140

The technical data are not binding. They neither constitute expressly warranted characteristics nor guaranteed properties nor a guaranteed durability. They are subject to modification. Our General Terms of Sale apply.

Georg Fischer Piping Systems Ltd, Postfach, CH-8201 Schaffhausen/Switzerland

Phone +41 -(0)52-631 1111

e-mail: info.ps@georgfischer.com

Internet: <http://www.gfps.com>