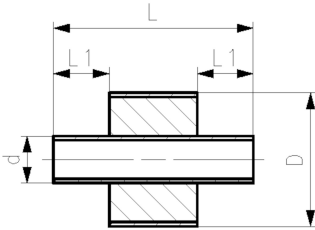




COOL-FIT 4.0 Doppelnippel mit Isolation, d32-d225

Ausführung:

- vorisoliertes PE100 SDR 11/17 metrisch
- Isolation aus GF HE Schaum
- Schlagfest Farbe: schwarz
- Für kurze Verbindungen zwischen COOL-FIT 4.0 Fittings Typ A



d/D (mm)	SDR	PN (bar)	Code	L (mm)	L1 (mm)	z (mm)	closest inch (inch)
32/90	11	16	738 913 408		36	151	1
40/110	11	16	738 913 409		40	155	1 ¼
50/110	11	16	738 913 410		44	163	1 ½
63/125	11	16	738 913 411		48	171	2
75/140	11	16	738 913 412		55	185	2 ½
90/160	11	16	738 913 413		62	199	3
110/180	11	16	738 913 414		72	219	4
160/250	17	10	738 913 417		90	255	6
225/315	17	10	738 913 420		110	295	8

The technical data are not binding. They neither constitute expressly warranted characteristics nor guaranteed properties nor a guaranteed durability. They are subject to modification. Our General Terms of Sale apply.

Georg Fischer Piping Systems Ltd, Postfach, CH-8201 Schaffhausen/Switzerland

Phone +41 -(0)52-631 1111

e-mail: info.ps@georgfischer.com

Internet: <http://www.gfps.com>